



NATIONWIDE FAMILY-OWNED MANUFACTURER  
OF KITCHEN & BATH CABINETRY SINCE 1937

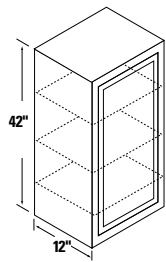
INTRODUCING  
**GRAY**  
AND  
42" TALL WALL  
CABINETS



**PRICELIST 2024**  
Effective 01/01/2024

# WALL CABINETS

**Cabinet Codes:** numerical designation indicates cabinet width, letter identifies height.

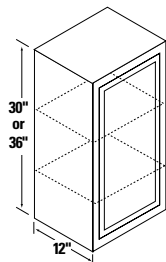


3 Adjustable shelves

## 42" High (WXT)

Item	Glenwood	Warmwood	Chadwood	DWhite	Gray
9WXT*	219	219	NA	258	269
12WXT*	241	241	NA	273	284
15WXT*	275	275	NA	293	304
18WXT*	307	307	NA	310	321
21WXT*	340	340	NA	327	338
24WXT*	373	373	NA	344	355
27WXT	438	438	NA	476	498
30WXT	472	472	NA	494	516
33WXT	504	504	NA	512	534
36WXT	538	538	NA	529	551

\*Single door. Single door wall units are reversible for right or left hinging, simply turn the cabinet over.

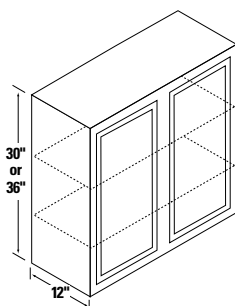


2 Adjustable shelves

## 36" High (WT)

Item	Glenwood	Warmwood	Chadwood	DWhite	Gray
9WT*	192	192	211	217	225
12WT*	207	207	226	232	240
15WT*	218	218	246	247	255
18WT*	236	236	268	262	270
21WT*	256	256	293	276	284
24WT*	272	272	313	292	300
27WT	331	331	384	398	413
30WT	348	348	401	412	427
33WT	365	365	423	426	441
36WT	387	387	445	445	460

\*Single door. Single door wall units are reversible for right or left hinging, simply turn the cabinet over.



2 Adjustable shelves

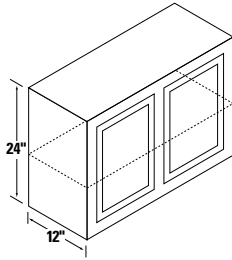
## 30" High (W)

Item	Glenwood	Warmwood	Chadwood	DWhite	Gray
9W*	161	161	174	196	204
12W*	176	176	192	209	217
15W*	194	194	211	225	233
18W*	208	208	229	237	245
21W*	225	225	249	251	259
24W*	240	240	266	264	272
27W	315	315	327	365	380
30W	328	328	340	378	393
33W	348	348	361	393	408
36W	364	364	378	406	421
42W	403	403	418	433	448
48W	441	441	464	463	478

\*Single door. Single door wall units are reversible for right or left hinging, simply turn the cabinet over.

# WALL CABINETS Continued

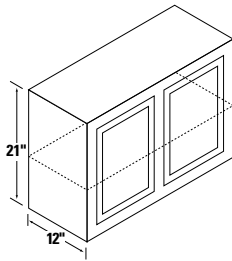
**Cabinet Codes:** numerical designation indicates cabinet width, letter identifies height.



## 24" High (Z)

Item	Glenwood	Warmwood	Chadwood	DWhite	Gray
24Z*	214	214	NA	248	256
30Z	297	297	NA	362	377
36Z	322	322	NA	383	398

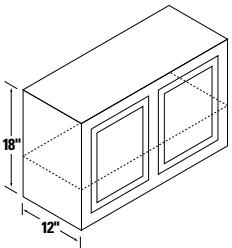
\*Single door.



## 21" High (R)

Item	Glenwood	Warmwood	Chadwood	DWhite	Gray
24R*	194	194	213	223	231
30R	248	248	267	319	334
36R	273	273	295	342	357

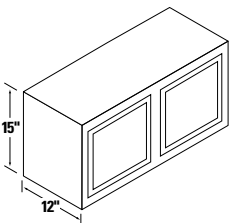
\*Single door.



## 18" High (Y)

Item	Glenwood	Warmwood	Chadwood	DWhite	Gray
24Y*	180	180	196	211	219
30Y	230	230	245	303	318
36Y	256	256	274	327	342

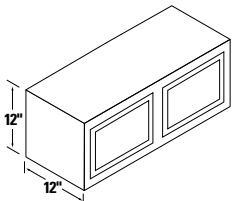
\*Single door.



## 15" High (X)

Item	Glenwood	Warmwood	Chadwood	DWhite	Gray
30X	199	199	210	273	288
33X	209	209	222	282	297
36X	219	219	232	292	307

\*Single door.



## 12" High (X12)

Item	Glenwood	Warmwood	Chadwood	DWhite	Gray
30X12	183	183	193	257	272
36X12	200	200	209	274	289

\*Single door.

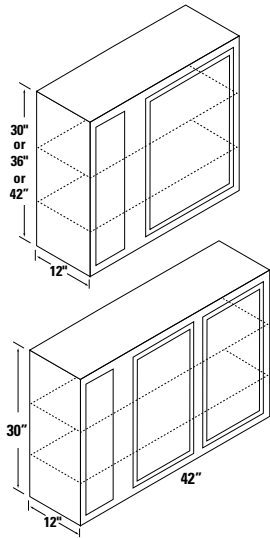
Please refer to page 12 for Wood Characteristics & Finishes.

For more information, see the warranty section at [kitchencompact.com/warranty](http://kitchencompact.com/warranty).

- Watch the DWhite touch-up kit video at [kitchencompact.com/dwkit](http://kitchencompact.com/dwkit).
- Gray touch-up kit for cabinet box only. Do not use gray touch up kit on doors or drawer fronts.

# WALL CORNER CABINETS

Cabinet Codes: numerical designation indicates cabinet width, letter identifies height.



42" High have 3 Adjustable shelves  
30" & 36" High have 2 Adjustable shelves

All lines may be pulled 4-1/2".  
\*Single door.

## 42" High (WCXT)

Item	Glenwood	Warmwood	Chadwood	DWhite	Gray
24WCXT*	327	327	NA	361	372
36WCXT*	463	463	NA	438	449

## 36" High (WCT)

Item	Glenwood	Warmwood	Chadwood	DWhite	Gray
24WCT*	270	270	305	305	313
36WCT*	348	348	394	370	378

## 30" High (WC)

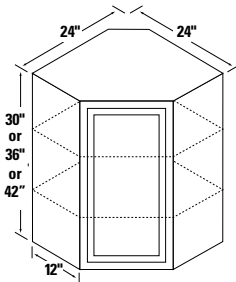
Item	Glenwood	Warmwood	Chadwood	DWhite	Gray
24WC*	239	239	261	275	283
36WC*	304	304	337	330	338
42WC	372	372	411	442	457

24WC Can pull to 28-1/2" -One 6" opening. One 6" Stile. One 9" opening for a 27 x 9-1/2" door.

36WC Can pull to 40-1/2" -One 6" opening. One 6" Stile. One 21" opening for a 27 x 21-1/2" door.

42WC Can pull to 46-1/2" -One 6" opening. One 6" Stile. Two 12" openings for two 27 x 12-1/2" doors. One 3" Stile (between 12" openings).

# ANGLE WALL CABINETS



42" High have 3 Adjustable shelves  
30" & 36" High have 2 Adjustable shelves

## 42" High (AXT)

Item	Glenwood	Warmwood	Chadwood	DWhite	Gray
24AXT	466	466	NA	484	495

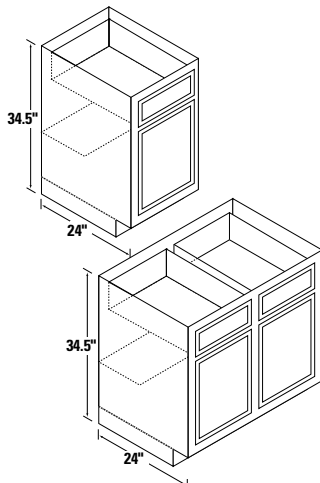
## 36" High (AT)

Item	Glenwood	Warmwood	Chadwood	DWhite	Gray
24AT	361	361	403	394	402

## 30" High (A)

Item	Glenwood	Warmwood	Chadwood	DWhite	Gray
24A	327	327	357	361	369

# BASE CABINETS (B)



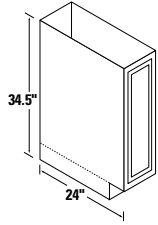
Item	Glenwood	Warmwood	Chadwood	DWhite	Gray
12B*	289	289	310	328	336
15B*	311	311	334	348	356
18B*	332	332	360	368	376
21B*	354	354	385	388	396
24B*	377	377	413	410	418
27B* (3" Side Stiles)	406	406	446	438	446
30B	493	493	533	571	586
33B (3" Side Stiles)	513	513	558	592	607
36B	533	533	579	608	623
42B	584	584	640	658	673
48B	629	629	695	699	714

Toe Kick is 4" high x 3" deep.

\*Single door. Single door base units are reversible, simply hang door right or left, using holes predrilled in rails.

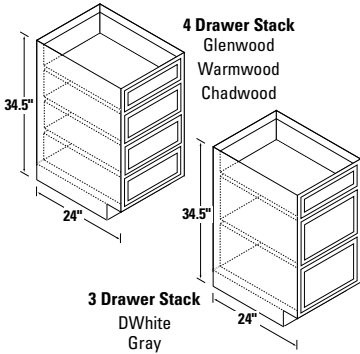
## TRAY CABINET (T)

Cabinet Codes: numerical designation indicates cabinet width, letter identifies height.



Item	Glenwood	Warmwood	Chadwood	DWhite	Gray
9T	215	215	234	252	260

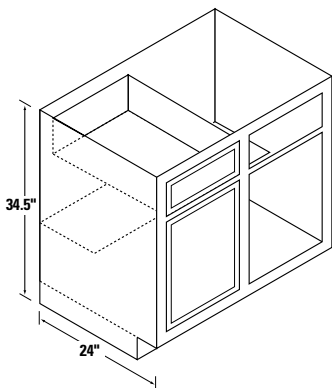
## DRAWER CABINET (D)



Item	Glenwood	Warmwood	Chadwood	DWhite	Gray
15D	516	516	555	502	502
18D	558	558	607	540	540
24D	641	641	702	618	618

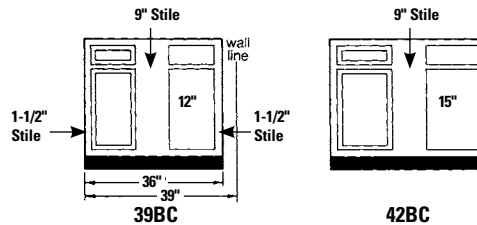
Available only as 4 drawer stack      Available only as 4 drawer stack      Available only as 4 drawer stack      Available only as 3 drawer stack      Available only as 3 drawer stack

## BASE CORNER CABINET (BC)

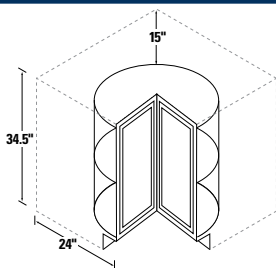


Item	Glenwood	Warmwood	Chadwood	DWhite	Gray
39BC	422	422	455	464	472
42BC	462	462	502	503	511

39BC must be pulled to 39" and may be pulled to 46".  
42BC may be pulled to 49".



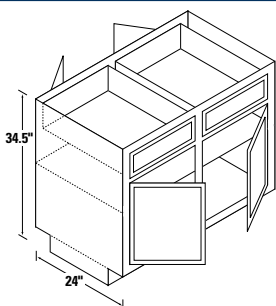
## LAZY SUSAN CORNER CABINET (LS)



Item	Glenwood	Warmwood	Chadwood	DWhite	Gray
36LS	566	566	620	544	544

Lazy Susan is 34-1/2" high and takes up 36" on each wall. Actual shelf is 24" diameter.  
Shipped without end panels.

## PENINSULA BASE CABINET (P)

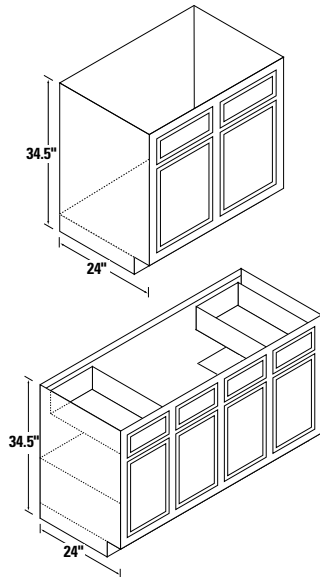


Item	Glenwood	Warmwood	Chadwood	DWhite	Gray
36B-P	702	702	791	772	802
48B-P	838	838	967	895	925
48BC-P	756	756	868	821	843

BC-P indicates Blind Corner Peninsula.

## RANGE & SINK BASE CABINETS (RBS)

Cabinet Codes: numerical designation indicates cabinet width, letter identifies height.



Item	Glenwood	Warmwood	Chadwood	DWhite	Gray
30RBS	369	369	404	465	480
33RBS (3" Side Stiles)	388	388	429	485	500
36RBS	396	396	438	489	504
42RBS	436	436	487	526	541

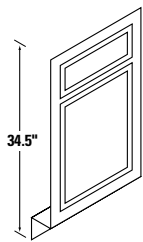
Item	Glenwood	Warmwood	Chadwood	DWhite	Gray
60SB	751	751	822	855	885

No shelf under sink (center section) and no back on cabinet.

Combination unit consists of 15-30-15.

Opening between drawers on **60SB** is 33".

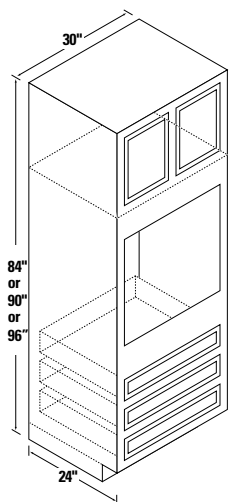
## SINK FRONT (SF)



Item	Glenwood	Warmwood	Chadwood	DWhite	Gray
18SF*	141	141	163	169	177

\*Square edge.

## OVEN CABINETS



Metal support rails included.

### 96" High (OUXT)

Item	Glenwood	Warmwood	Chadwood	DWhite	Gray
30OUXT	1,271	1,271	NA	1,368	1,383

### 90" High (OUT)

Item	Glenwood	Warmwood	Chadwood	DWhite	Gray
30OUT	1,154	1,154	1,285	1,243	1,258

### 84" High (OU)

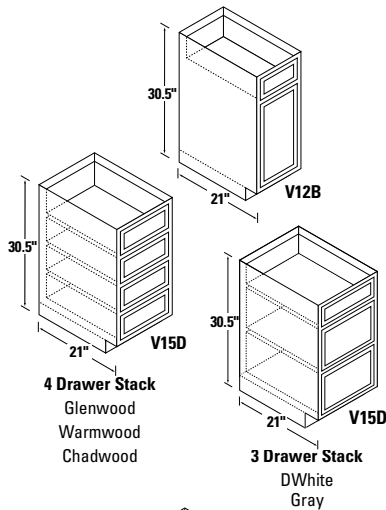
Item	Glenwood	Warmwood	Chadwood	DWhite	Gray
30OU	1,087	1,087	1,217	1,192	1,207

To accommodate almost every type of oven, the opening can be cut from a minimum width of 21" to a maximum width of 28.5" and a minimum height of 27.5" to a maximum height of 60" (one or more lower drawers may need to be removed).

# VANITY CABINETS

Cabinet Codes: numerical designation indicates cabinet width, letter identifies height.

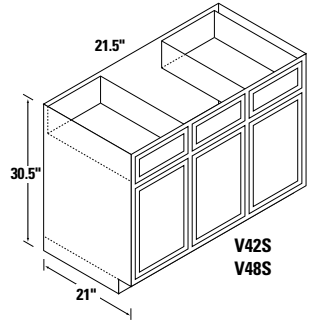
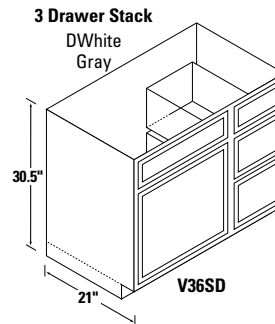
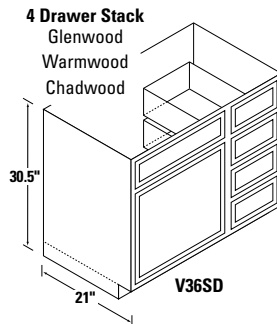
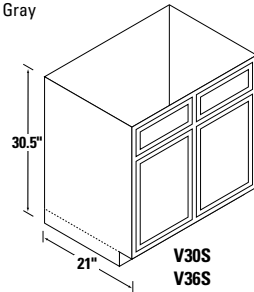
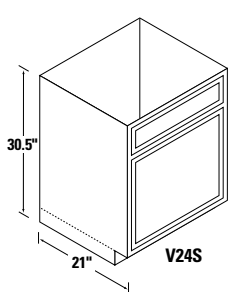
## 30.5" High



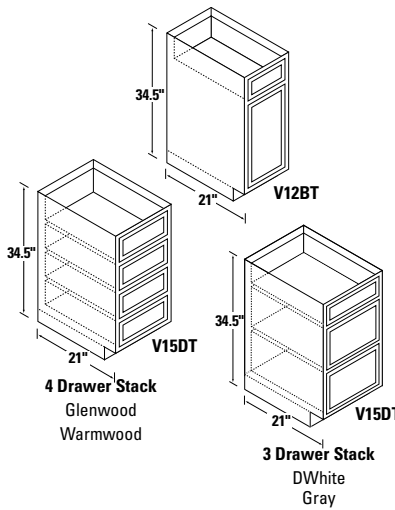
Item	Glenwood	Warmwood	Chadwood	DWhite	Gray
V12B	253	253	271	292	300
V15D	434	434	451	459	459
V24S	282	282	308	296	304
V30S	330	330	359	404	419
V36S	360	360	394	432	447
V36SD	502	502	552	527	535
V42S*	521	521	567	604	626
V48S*	561	561	612	641	663

Opening between drawers on V42S/V48S is 21.5".

\*Two outside working drawers.



## 34.5" High

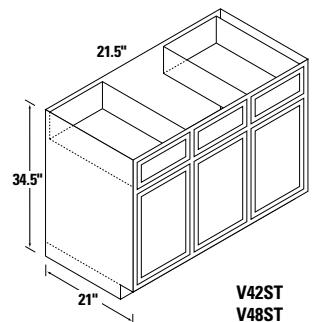
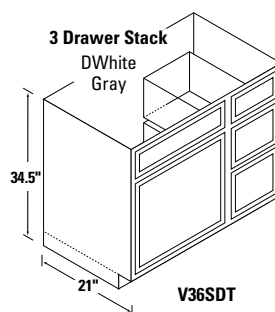
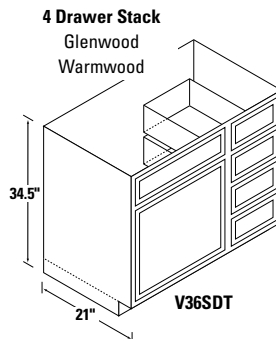
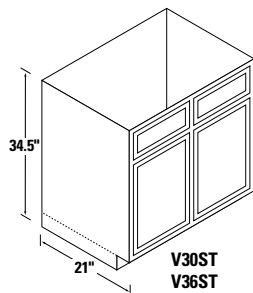
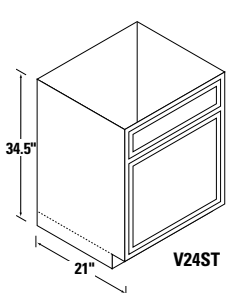


Item	Glenwood	Warmwood	Chadwood	DWhite	Gray
V12BT	274	274	NA	312	320
V15DT	512	512	NA	492	492
V24ST	304	304	NA	320	328
V30ST	359	359	NA	432	447
V36ST	390	390	NA	460	475
V36SDT	578	578	NA	550	558
V42ST*	565	565	NA	645	667
V48ST*	606	606	NA	684	706

All Standard/Tall Vanities 21" deep.

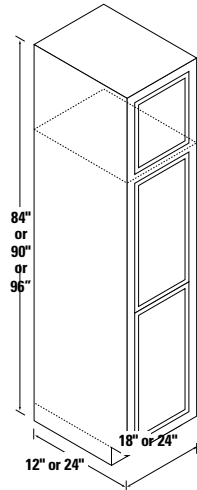
Opening between drawers on V42S/V48S is 21.5".

\*Two outside working drawers.



# BROOM CABINETS

Cabinet Codes: numerical designation indicates cabinet width, letter identifies height.



## 96" High (BRBXT)

Item	Glenwood	Warmwood	Chadwood	DWhite	Gray
18BRWXT (12" deep)	591	591	NA	644	666
18BRBXT (24" deep)	784	784	NA	844	866
24BRBXT (24" deep)	971	971	NA	913	935

## 90" High (BRBT)

Item	Glenwood	Warmwood	Chadwood	DWhite	Gray
18BRWT (12" deep)	557	557	619	621	643
18BRBT (24" deep)	748	748	817	818	840
24BRBT (24" deep)	899	899	986	876	898

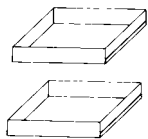
## 84" High (BRB)

Item	Glenwood	Warmwood	Chadwood	DWhite	Gray
18BRW (12" deep)	521	521	576	585	607
18BRB (24" deep)	701	701	763	772	794
24BRB (24" deep)	769	769	847	827	849

No shelves included with Broom Cabinets. Optional Shelf Kit Includes four (4) shelves and clips:

18BRW/BRWT/BRWXT kits @ \$68/kit, 18BRB/BRBT/BRBXT kits @ \$124/kit, and 24BRB/BRBT/BRBXT kits @ \$165/kit.

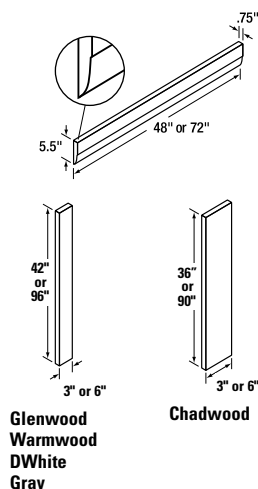
# PANTRY/BASE ROLL-OUT TRAY



Item	Glenwood	Warmwood	Chadwood	DWhite	Gray
15BT	201	201	201	201	201
18BT	217	217	217	217	217
24BT	229	229	229	229	229

Priced per box – packaged 2 trays per box

# MISCELLANEOUS ITEMS

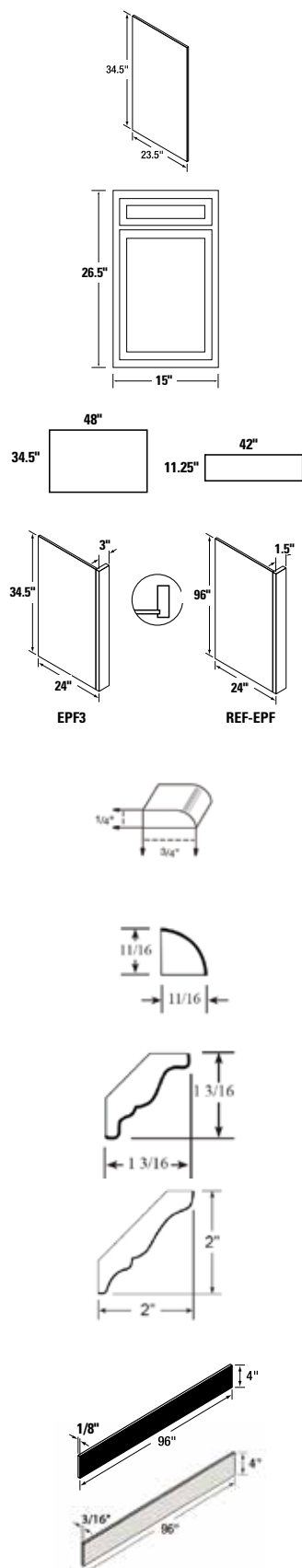


Item	Glenwood	Warmwood	Chadwood	DWhite	Gray
<b>72" Valance</b> 3/4" x 5-1/2" x 72" (6 to box) <b>Per piece</b>	82	82	121	94	94
<b>48" Valance</b> 3/4" x 5-1/2" x 48" (6 to box) <b>Per piece</b>	62	62	90	72	72
<b>3" Filler Strip</b> 3" W x 42" L (12 to box) <b>Per piece</b>	41	41	39	48	48
<b>6" Filler Strip</b> 6" W x 42" L (6 to box) <b>Per piece</b>	61	61	80	74	74
<b>3" Filler Strips</b> 3" W x 96" L (12 to box) <b>Per piece</b> (Chadwood 3" W x 90" L)	75	75	95	87	87
<b>Touch-Up Pens</b> (12 to box) <b>Per pen</b>	39	39	41	NA	NA
<b>Pint of Stain (Per pint)</b>	69	69	47	NA	NA
<b>Touch-up Kit</b>	NA	NA	NA	133	133

Learn more about the DWhite touch-up kit at [kitchencompact.com/dwkit](https://kitchencompact.com/dwkit).

# MISCELLANEOUS ITEMS Continued

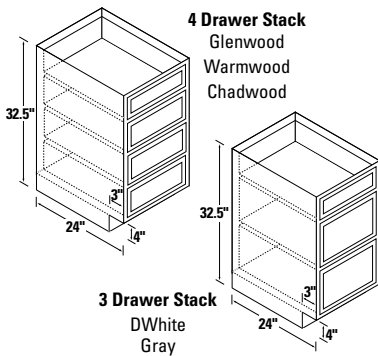
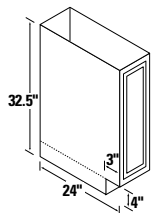
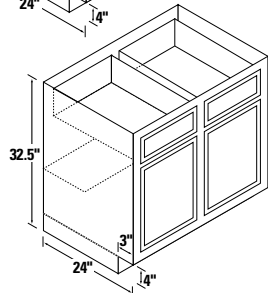
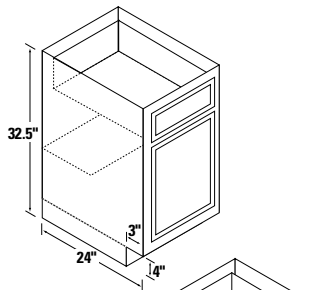
**Cabinet Codes:** numerical designation indicates cabinet width, letter identifies height.



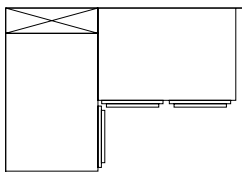
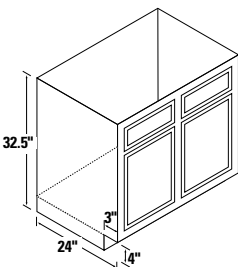
Item	Glenwood	Warmwood	Chadwood	DWhite	Gray
<b>Base End Panels – EP</b> May be used R or L 1/2" x 23-1/2" x 34-1/2" (6 to box) <b>Per piece</b>	67	67	69	77	77
<b>Salesman Sample Door &amp; Frame</b> 15" x 26-1/2" Front (4 to box) <b>Per piece</b>	165	165	182	195	203
<b>Panel</b> (also for dishwashers) 7/32" x 34-1/2" x 48" (6 to box) <b>Per piece</b>	177	177	165	205	205
<b>Panel</b> 7/32" x 11-1/4" x 42" (6 to box) <b>Per piece</b>	47	47	NA	54	54
<b>End Panel Faced (EPF3)</b> Faced with 3" stile. 1/2" x 24" x 34-1/2" (4 to box) <b>Per piece</b>	119	119	131	138	138
<b>Refrigerator End Panel (REF – EPF)</b> Faced with 1.5" stile 1/2" x 24" x 96" ( <b>CHADWOOD 90"</b> ) (2 to box) <b>Per piece</b>	308	308	294	543	543
<b>Scribe Molding</b> 1/4" x 3/4" x 96" (63 pieces/504' to box) <b>Per piece</b>	47	47	35	46	46
<b>Quarter Round Molding</b> 11/16" x 11/16" x 96" (25 pieces/200' to box) <b>Per piece</b>	43	43	39	39	39
<b>Small Crown Molding</b> 1-3/16" x 1-3/16" x 96" (15 pieces/120' to box) <b>Per piece</b>	75	75	69	68	68
<b>Large Crown Molding</b> 2" x 2" x 96" (16 pieces/128' to box) <b>Per piece</b>	120	120	124	109	109
<b>Toe Kick Material</b> Black Hardboard 1/8" x 4" x 96" (25 pieces/200' to box) <b>Per piece</b>	19	19	19	19	19
<b>Matching Toe Kick Material</b> Finished TK 3/16" x 4" x 96" (25 pieces/200' to box) <b>Per piece</b>	67	67	64	63	63

# UNIVERSAL DESIGN CABINETS ADA Accessible Cabinets

Kitchen Kompact offers 32-1/2" high base cabinets to help comply with ADA (Americans with Disabilities Act) requirements. Such cabinets are especially important for multi-family projects subject to HUD and FHA funding. Kitchen Kompact will only provide ADA accessible cabinets on multi-family projects where the ADA accessible units are 10% or less of the entire project. These cabinets are special order and are available in all door styles. Please allow a minimum of two weeks for delivery.



**3 Drawer Stack**  
DWhite  
Gray



## Universal Design Base Cabinets

Item	Glenwood	Warmwood	Chadwood	DWhite	Gray
UD12B*	347	347	372	393	401
UD15B*	373	373	401	418	426
UD18B*	399	399	432	441	449
UD21B*	425	425	462	466	474
UD24B*	452	452	495	492	500
UD27B* (3" Side Stiles)	487	487	535	526	534
UD30B	591	591	639	686	701
UD33B (3" Side Stiles)	615	615	670	710	725
UD36B	639	639	695	730	745
UD42B	701	701	768	789	804
UD48B	754	754	834	838	853

## Universal Design Tray Cabinets

Item	Glenwood	Warmwood	Chadwood	DWhite	Gray
UD9T	257	257	281	302	310

Toe Kick is 4" high x 3" deep.

\*Single door. Single door base units are reversible, simply hang door right or left, using holes predrilled in rails.

## Universal Design Drawer Cabinets

Item	Glenwood	Warmwood	Chadwood	DWhite	Gray
UD15D	620	620	666	603	603
UD18D	669	669	728	648	648
UD24D	770	770	842	742	742
Available only as 4 drawer stack		Available only as 4 drawer stack	Available only as 4 drawer stack	Available only as 3 drawer stack	Available only as 3 drawer stack

## Universal Design Range & Sink Base Cabinets

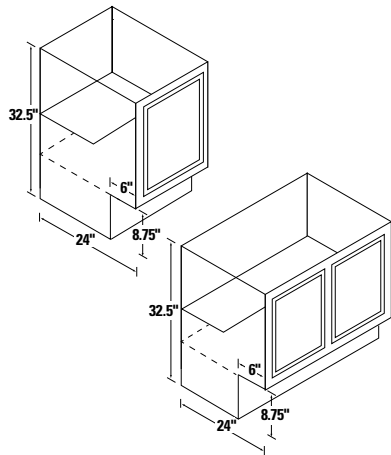
Item	Glenwood	Warmwood	Chadwood	DWhite	Gray
UD30RBS	443	443	485	558	573
UD33RBS (3" Side Stiles)	466	466	515	582	597
UD36RBS	476	476	525	587	602
UD42RBS	524	524	584	631	646

## Universal Design Base Corner Cabinets

Item	Glenwood	Warmwood	Chadwood	DWhite	Gray
UD39BC	507	507	546	556	564
UD42BC	555	555	602	603	611

**UD39BC** must be pulled to 39" and may be pulled to 46". **UD42BC** may be pulled to 49".

# HANDICAPPED DESIGN CABINETS ADA Accessible Cabinets

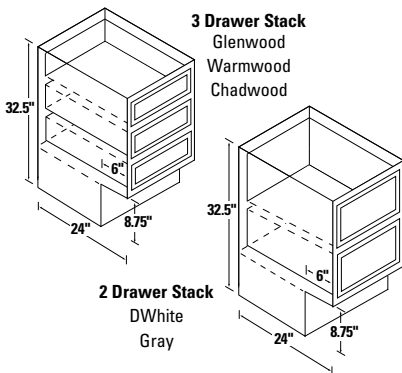


## Handicapped Design Base Cabinets

Item	Glenwood	Warmwood	Chadwood	DWhite	Gray
H12B*	347	347	372	393	401
H15B*	373	373	401	418	426
H18B*	399	399	432	441	449
H21B*	425	425	462	466	474
H24B*	452	452	495	492	500
H27B* (3" Side Stiles)	487	487	535	526	534
H30B	591	591	639	686	701
H33B (3" Side Stiles)	615	615	670	710	725
H36B	639	639	695	730	745
H42B	701	701	768	789	804
H48B	754	754	834	838	853

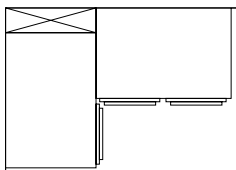
**Toe Kick** is 8.75" high x 6" deep.

\*Single door. Single door base units are reversible, simply hang door right or left, using holes predrilled in rails.



## Handicapped Design Drawer Cabinets

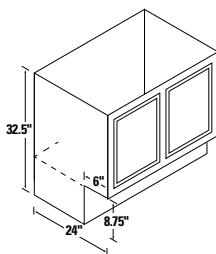
Item	Glenwood	Warmwood	Chadwood	DWhite	Gray
H15D	620	620	666	603	603
H18D	669	669	728	648	648
H24D	770	770	842	742	742
	Available only as 3 drawer stack	Available only as 3 drawer stack	Available only as 3 drawer stack	Available only as 2 drawer stack	Available only as 2 drawer stack



## Handicapped Design Base Corner Cabinets

Item	Glenwood	Warmwood	Chadwood	DWhite	Gray
H39BC	507	507	546	556	564
H42BC	555	555	602	603	611

**H39BC** must be pulled to 39" and may be pulled to 46". **H42BC** may be pulled to 49".

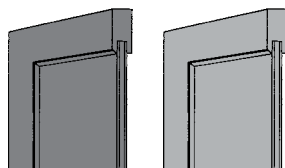


## Handicapped Design Range & Sink Base Cabinet

Item	Glenwood	Warmwood	Chadwood	DWhite	Gray
H30RBS	443	443	485	558	573
H33RBS	466	466	515	582	597
H36RBS	476	476	525	587	602
H42RBS	524	524	584	631	646

# DOOR STYLES

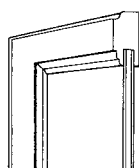
**Glenwood and Warmwood:** Shaker style door frames are made of solid beech, mortised and tenoned. The recessed plywood insert is three-ply with a rotary cut hard maple veneer. Drawer heads have routed finger pulls.



Glenwood

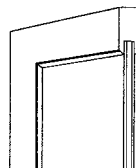
Warmwood

**Chadwood:** Solid Appalachian oak frames are joined by mortise and tenon. The recessed plywood insert is three-ply with a rotary cut red oak veneer. Drawer heads have routed finger pulls.



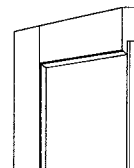
Chadwood Oak

**DWhite:** Painted white shaker style door frames are made of solid beech and/or poplar, mortised and tenoned. The recessed MDF or plywood insert is a three-ply with a rotary cut hard maple veneer. Drawer heads have routed finger pulls.



DWhite

**Gray:** Decorative Laminate Veneer (DLV) doors are a polypropylene material over MDF. The DLV doors are manufactured using a 5 piece coped joint construction.



Gray

## SPECIFICATIONS

### Cabinet Construction

All face frames are 3/4" kiln-dried rails, joined by mortise and tenon with glue. Glenwood and Warmwood, are built using a mixture of solid beech and sycamore. DWhite and Gray face frames are built using a mixture of solid beech, sycamore and poplar. Chadwood face frames are built using solid oak. All wall and base cabinets have 1/8" backs. Wall cabinets are equipped with solid wood hanging rails at back, both top and bottom. End panels are wood veneered, 1/2" thick engineered wood core plywood, fastened to front frame with tongue-in-groove construction. Tops and bottoms are 3/16" hardboard dadoed into sides, interlocked into hanging rails of all wall units, and secured with an adhesive for added strength.

### Finish

A 4-step process is applied to the exterior finish of Glenwood, Warmwood, and Chadwood: Stain, Sealer, Sanding, and Catalyzed Top Coat.

A 3-step process is applied to the exterior finish of DWhite: Primer, Sanding, and Enamel.

Gray: A 3-step process is applied to the exterior finish of the gray cabinet box: Primer, Sanding, and Enamel. The Gray Door and Drawer Front is a Decorative Laminate Veneer.

### Wood Characteristics & Finishes

On all wood products, expansion, contraction, and warping are typical due to changes in climate conditions. Painted finishes may develop slight separation lines, finish breaks, and seam lines. These changes will be most noticeable at the stiles, rails, and panel joints. Painted and stained finishes are also susceptible to changes in color due to exposure to natural light, extreme heat, smoke, etc. The changes may become more noticeable over time and through seasonal changes. These changes are normal and are not considered quality defects.

### Shelves

All wall cabinets feature adjustable shelves. A selection of six different heights is built into each 30" high and taller wall cabinet. On 2-door wall units, the center 3" stile is used for center support of adjustable shelves. It is recommended that a 1/4" hole be drilled in the back for additional center support. The extra shelf clip is provided. Shelves are 1/2" engineered wood, with rounded front edge and printed wood grain.

### Hardware

Chadwood, Glenwood, Warmwood, and DWhite feature concealed self-closing hinges. Gray features concealed soft-closing hinges. No door pulls included.

### Vanities

Vanity size cabinets are available in all lines. Tall vanities only available in Glenwood, Warmwood, DWhite and Gray.

### Doors

**Chadwood:** Door frames are mortised and tenoned construction of solid oak. The recessed plywood insert is three-ply with a rotary cut red oak veneer.

**Glenwood/Warmwood:** Shaker style door frames are made of solid beech, mortised and tenoned. The recessed plywood insert is three-ply with a rotary cut hard maple veneer.

**DWhite:** Painted white shaker style door frames are made of solid beech and/or poplar, mortised and tenoned. The recessed MDF or plywood insert is a three-ply with a rotary cut hard maple veneer.

**Gray:** Decorative Laminate Veneer (DLV) doors are a polypropylene material over MDF. The DLV doors are manufactured using a 5 piece coped joint construction.

### Drawers

Drawers operate with a full front to back epoxy coated suspension system on nylon rollers. Drawer fronts of solid oak, poplar, and beech are finger routed on the bottom for easy opening.

### Oven Cabinets

Oven cabinets are made to accommodate almost every type oven by removing the necessary lower drawer units. Metal support rails are included.

### ADA Accessible Cabinets

Kitchen Kompact will only provide ADA accessible cabinets on multi-family projects where the ADA accessible units are 10% or less of the entire project. ADA accessible cabinets are available, on special order, in a limited number of sizes.

### Outline Specifications

Kitchen cabinets shall be as manufactured by Kitchen Kompact according to the company's material specifications. Finishes and cabinet units (Chadwood, Glenwood, Warmwood, DWhite and Gray) are as specified by size and type according to Kitchen Kompact stock catalogs. Cabinets are reversible so there is no need to specify left or right. Hardware, finish, materials, and other requirements shall be as specified by Kitchen Kompact. Each cabinet is shipped individually and in its own carton.

### Cabinet Code Descriptions

For ease of ordering, the numerical designation indicates the cabinet width, the letter identifies the height.

### Flexible Installation

Wall cabinets are reversible for right- or left-hand installation. Base cabinets come hinged left, but can be easily reversed by moving hinges to predrilled right-hand locations.

### General Information

Orders are taken subject to our approval. Any changes must be made within four days after date of our acknowledgment. If this notice is not received, cabinets will be shipped according to the acknowledgment. Orders are not subject to cancellation without our written consent. Do not return merchandise to factory without our permission. All merchandise shipped in good condition - any damage claims must be made with delivering carrier.

SUBJECT TO CHANGE WITHOUT NOTICE.  
SHIPMENTS F.O.B. JEFFERSONVILLE.

Kitchen Kompact cabinets meet or exceed the American National Standards Institute #A161.1 recommended minimum construction and performance standards for kitchen and vanity cabinets.

*Kitchen Kompact, Inc. reserves the right to change design, specifications, or materials without being obliged to incorporate such changes in products of prior manufacture. The artwork and specifications contained herein are the property of Kitchen Kompact, Inc., and may not be copied or reproduced without the written consent of the company.*



Kitchen Kompact, Inc.  
911 East 11th St. (47130)  
P.O. Box 868  
Jeffersonville, IN 47131-0868  
(812) 282-6681 Phone  
(812) 282-7880 Fax  
[kitchenkompact.com](http://kitchenkompact.com)



Kitchen Kompact is certified under the Kitchen Cabinet Manufacturers Association's Environmental Stewardship Program\*\*.

\*\* This certification has been recognized by the National Association of Home Builders' (NAHB) with the Green Building Award for Advocate of the Year for its environmental and sustainability achievements.

PL/SS 0124 Printed in USA