



NATIONWIDE FAMILY-OWNED MANUFACTURER
OF KITCHEN & BATH CABINETRY SINCE 1937

INTRODUCING
GRAY
AND
42" TALL WALL
CABINETS



FULL LINE 2024



GRAY

Recessed panel design with Decorative Laminate Veneer (DLV) technology is your key to a kitchen that stands up to life's demands. Our ultra-durable finish with the custom look of paint, but with an easier-to-care-for finish, allowing you to make a mess, wipe it clean, and carry on with life. Soft Close Doors Only. Door Pulls not included.

Gray touch-up Kit available for use on cabinet box only.



*Founded by Dwight Gahm, we are now
operated by a third generation!*





DWHITE

Our recessed panel, Shaker style cabinets are available in painted white. This painted wood door style enables a variety of design options with countertops, flooring and decorative backsplashes. Door pulls not included.

Please refer to the List Price and Specification Booklet (page 11) for Wood Characteristics and Painted Finishes. For more information, see the warranty section at kitchencompact.com/warranty.

Watch the DWhite touch-up kit video at kitchencompact.com/dwkit.





GLENWOOD

For those who want a darker, chocolate color, and an up-to-date Shaker style, choose **Glenwood**. The clean, well-defined edges and ***recessed panel*** doors bring a touch of elegance to your home. Door pulls not included.



*Kitchen Kompact employs nearly 300 workers
with an average tenure of 15 years.*





WARMWOOD

Not as dark as Glenwood, **Warmwood's** chestnut brownish tone, clean lines, and ***recessed panel*** doors give you another choice in our most popular Shaker style. Door pulls not included.



Kitchen Kompact is one of the most efficient kitchen cabinet manufacturers in the United States.





CHADWOOD

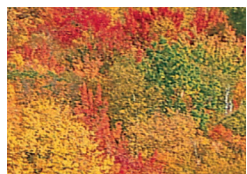
A traditional classic with a golden oak finish, **Chadwood** is right at home in any kitchen. With its ***oak recessed panel*** doors, **Chadwood** can be designed and accessorized to fit any need, taste or budget. Door pulls not included.



Our cabinets are proudly made in the USA!



The Enduring Beauty of Wood



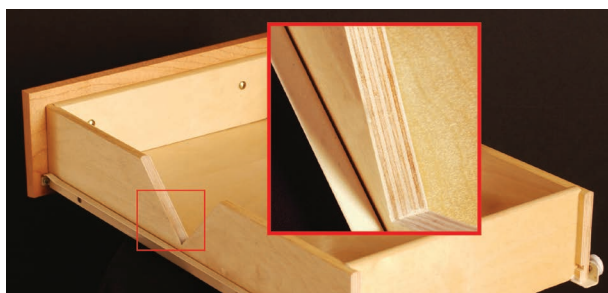
There's solid wood durability built into every KK cabinet. From the hardwood on the face frames and pine hanging rails to the solid wood elements, each cabinet is built to last.

Note these quality features:

- All frames are built of solid 3/4" hardwoods. Each rail is kiln-dried, joined by mortise and tenon, and then glued for added strength.
- Solid wood toe kicks, 3/4" thick.
- Solid wood hanging strips on wall and base cabinets, located at the top and bottom.
- End panels consist of 3-ply construction, 1/2" thick engineered wood core with hardwood veneers.

All painted and stained cabinets are protected with a durable topcoat or enamel. The result is a surface that is virtually "family-proof," resisting many household chemicals, water, alcoholic beverages, mild acids, and even nail polish.

The result is more than just a kitchen you can cook in — it's a kitchen you can live in at a price you can live with.



And there's more. All Kitchen Kompact cabinets feature plywood drawers as a standard. A front-to-back epoxy-coated drawer system is securely attached to a solid wood strip in the back of the cabinet for stability, and years of smooth operation. We also offer universal design cabinets.

Kitchen Kompact, Inc. reserves the right to change design, specifications or materials without being obliged to incorporate such changes in products of prior manufacture. The artwork and specifications contained herein are the property of Kitchen Kompact, Inc. and may not be copied or reproduced without the written consent of the company.

A physical sample must be viewed for actual color of cabinetry.

Custom Touches

Pantry roll-out trays



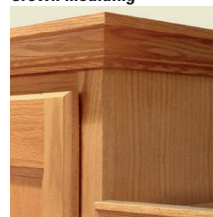
Base roll-out trays



Accessory Match stem glass holder



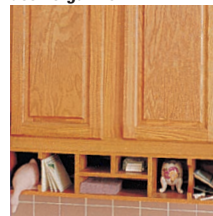
Crown moulding



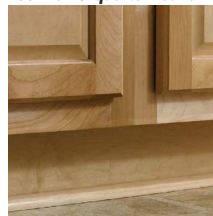
Accessory Match lattice wine rack



Accessory Match desk organizer



Toe kick & quarter round



Rev-A-Shelf undersink drip tray



Rev-A-Shelf half moon shelf



Rev-A-Shelf pull-out filler



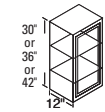
These accessories, available for KK cabinets, give any kitchen a custom look. Ask your dealer for details.

For additional photos and information, visit:

accessorymatch.com
(260) 495-2501

rev-a-shelf.com
(800) 626-1126

WALL CABINETS

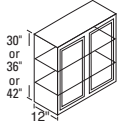


42" High

9WXT* 27WXT
12WXT* 30WXT
15WXT* 33WXT
18WXT* 36WXT
21WXT*
24WXT*

36" High

9WT* 27WT
12WT* 30WT
15WT* 33WT
18WT* 36WT
21WT*
24WT*

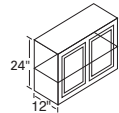


30" High

9W* 27W
12W* 30W
15W* 33W
18W* 36W
21W* 42W
24W* 48W

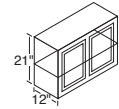
24" High

24Z* 36Z
30Z



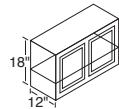
21" High

24R* 36R
30R



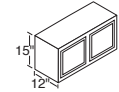
18" High

24Y* 36Y
30Y



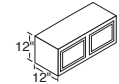
15" High

30X 36X
33X

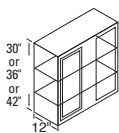


12" High

30X12 36X12



WALL CORNER CABINETS



42" High

24WCXT* 36WCXT*

36" High

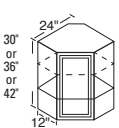
24WCT* 36WCT*

30" High

24WC* 36WC*

All can be pulled 4-1/2".

ANGLE WALL CABINETS



42" High

24AXT

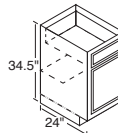
36" High

24AT

30" High

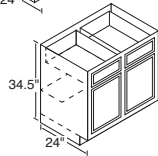
24A

BASE CABINETS

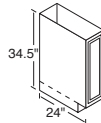


12B* 30B
15B* 33B*
18B* 36B
21B* 42B
24B* 48B
27B*

*3" side stiles.

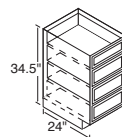


TRAY CABINET

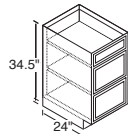


9T

DRAWER CABINETS



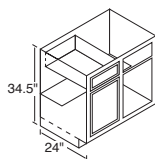
15D 24D
18D



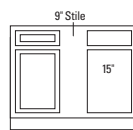
3 Drawer Stack
DWhite
Gray

4 Drawer Stack
Glenwood,
Warmwood
Chadwood

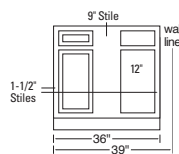
BASE CORNER CABINETS



39BC
42BC

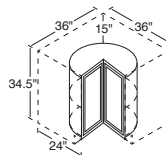


42BC
Can be pulled to 49".



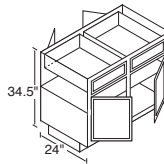
39BC
Must be pulled 3".
Can be pulled to 46".

LAZY SUSAN CORNER CABINET



36LS
Shipped without
finished ends.

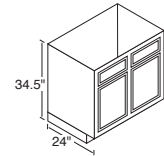
PENINSULA BASE CABINETS



36B-P
48B-P
48BC-P

BC-P indicates Blind
Corner Peninsula.

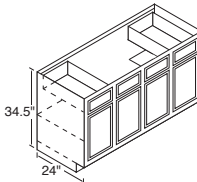
RANGE & SINK BASE CABINETS



30RBS 36RBS
33RBS* 42RBS

*3" side stiles.

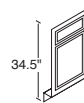
SINK BASE CABINETS



60SB

No shelf under sink –
no back.

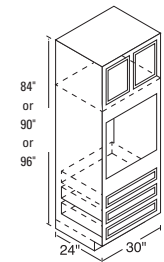
SINK FRONTS



18SF*

*Square edge.

OVEN CABINETS



96" High

300UXT

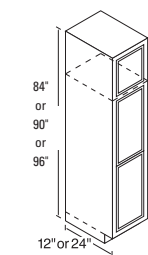
90" High

300UT

84" High

300U

BROOM CABINETS



96" High

18BRWXT (12" deep)
18BRBXT (24" deep)
24BRBXT (24" deep)

90" High

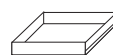
18BRWT (12" deep)
18BRBT (24" deep)
24BRBT (24" deep)

84" High

18BRW (12" deep)
18BRB (24" deep)
24BRB (24" deep)

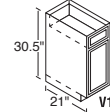
No shelves included
with broom cabinets.
Optional Shelf Kit
available.

ACCESSORIES



Pantry/Base
Roll-Out Tray
15BT 18BT 24BT

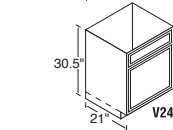
VANITY CABINETS



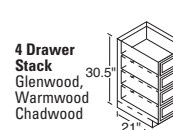
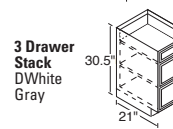
30.5" Standard

V12B V36S
V15D V36SD
V24S V42S*
V30S V48S*

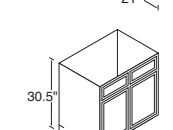
*Two outside
working drawers.



3 Drawer
Stack
DWhite
Gray



4 Drawer
Stack
Glenwood,
Warmwood
Chadwood



TALL VANITY CABINETS

Tall vanities are only
available for Glenwood,
Warmwood, DWhite and
Gray.

34.5" Tall

V12BT V36ST
V15DT V36SDT
V24ST V42ST*
V30ST V48ST*

*Two outside
working drawers.

ADA ACCESSIBLE CABINETS

ADA accessible cabinets are available, on
special order, in a limited number of sizes.

Cabinet Code Descriptions

For ease of ordering, the numerical
designation indicates the cabinet width,
the letter identifies the height.

*Single door.



Kitchen Compact, Inc.
911 East 11th St. (47130)
P.O. Box 868
Jeffersonville, IN 47131-0868
(812) 282-6681 Phone
(812) 282-7880 Fax
kitchencompact.com



Kitchen Compact is certified under
the Kitchen Cabinet Manufacturers
Association's Environmental
Stewardship Program**.

** This certification has been recognized by the
National Association of Home Builders' (NAHB)
with the Green Building Award for Advocate of
the Year for its environmental and sustainability
achievements.